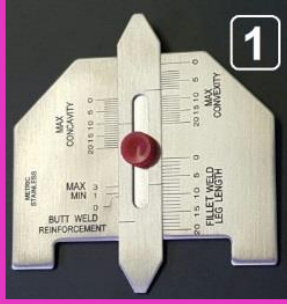
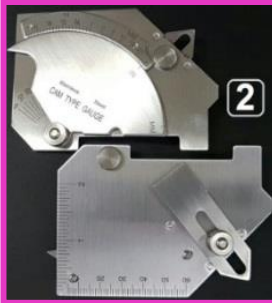


# WELDING GAUGES {PAGE-1}

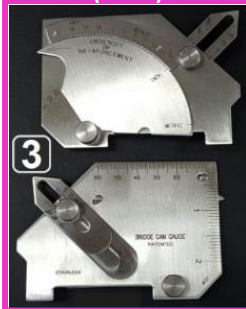
**1.WG-103-AWS**  
Automatic Weld  
Size Welding Gauge



**2.WG-104-BCA**  
Cam Type  
Gauge-A



**3.WG-104-BCB**  
Bridge Cam  
Gauge-B  
(MG-8)



**4.WG-105-HILO**  
Eco Single Purpose  
Hi-Lo



**5.WG-106-HILO**  
Hi-Lo Welding  
Gauge



**6.WG-108-WAC**  
V-WAC Welding  
Gauge



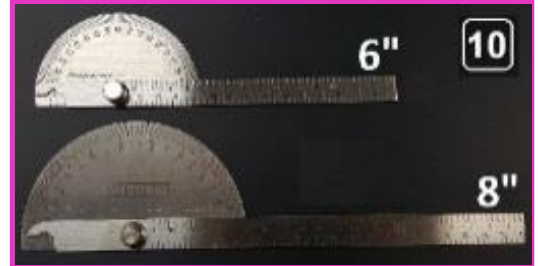
**7.WG-118-TG**  
Taper Gauge  
(1-15mm)



**8.WG-109-FGA**  
Weld Fillet Gauge Set (7pcs)-  
with Groove in Inches (mm  
for Ref)



**10.WG-180-PR-6/8**  
Welding Gauge Protractor  
0-180 Deg Size 6" & 8"



**9.WG-25-IM**  
Inspection  
Mirror  
(Rectangular)



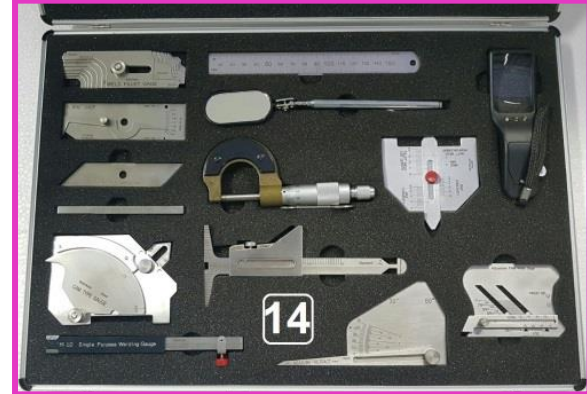
**12. WG-410-FG**  
Feeler Gauge  
(For Thickness 0.04 to  
1.0 mm), 75 mm Long



**16. WG-121-WSG**  
Weld Seam Gauge ( mm)



**14. WG-K-202**  
Welding Gauge Kit ( In mm)



**13. WG-025-EMM**  
External Micrometer (Range 0-  
25mm , 0.01 mm)



**11.WG-107-SFG**  
Skew-T Fillet Weld Gauge

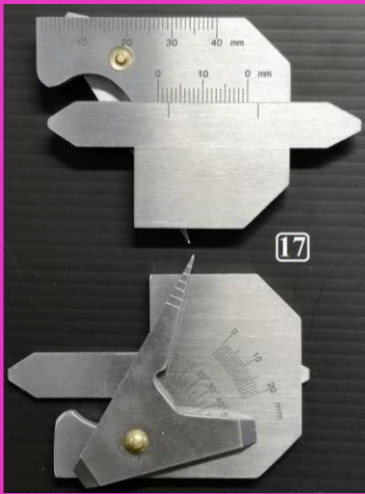


**15. WG-101-DDG**  
Digital Depth/Pit Gauge  
(Range : 0-25.4 / 1")

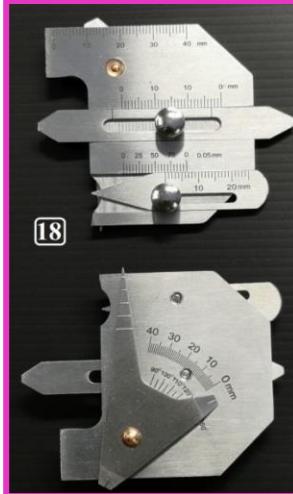


# WELDING GAUGES {PAGE-2}

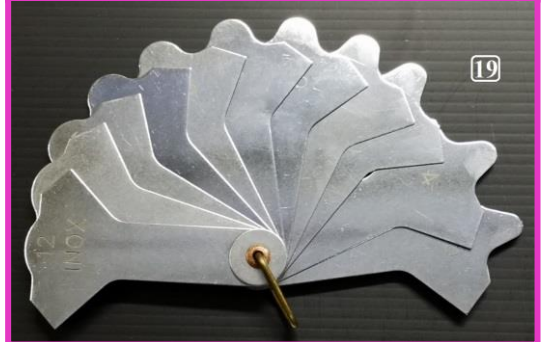
**17.WG-110-A**  
Welding Gauge 10A Type



**18.WG-112HJC40**  
Welding Gauge HJC-40 Type



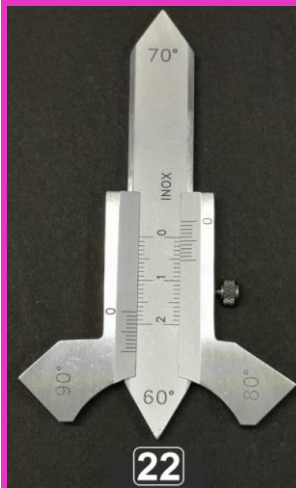
**19.WG-137-RLG**  
Radius Linear Gauge (mm)



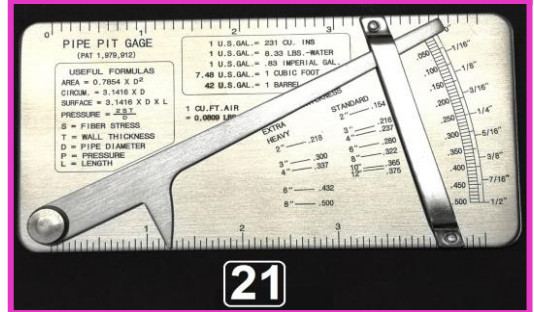
**20.WG-150-CG**  
Contour Gauge  
45/150 mm



**22.WG-102-VWG**  
Vernier Welding Gauge



**21.WG-120-PPG**  
Pipe Pit Gage (0 to 1/2')



**27. WG-125-WFC**  
Hexagonal Wet Film Combs



## Ruler

### PART NO

### DESCRIPTION

- |    |           |                                       |
|----|-----------|---------------------------------------|
| 23 | WG-150-RL | Ruler 150 mm                          |
| 24 | WG-150-PR | Portable Ruler 150 mm                 |
| 25 | WG-TG-RL  | Taper Gauge(1-15mm) + Ruler           |
| 26 | WG-TG-PR  | Taper Gauge (1-15mm) + Portable Ruler |

